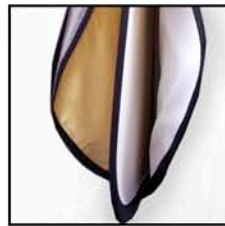
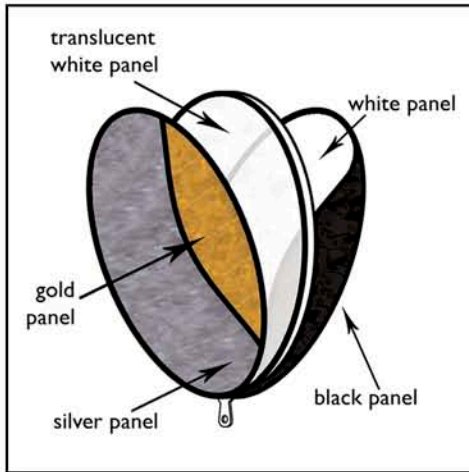


The CRK42 5-in-1 Circular Reflector Kit

Paul C. Buff

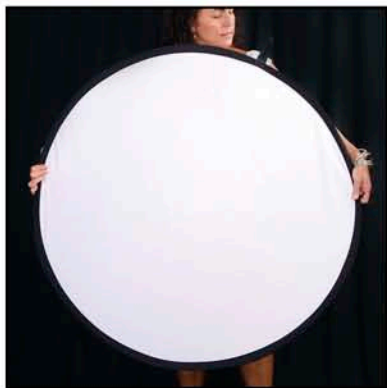
Paul C. Buff, Inc. • 2725 Bransford Avenue • Nashville, Tennessee • 37204 • Toll Free Customer Service 1-800-443-5542 • Local 615-383-3982 • Fax 615-383-0676 • www.paulcuff.com



The CRK42 5-in-1 Circular Reflector Kit offers you the versatility of **five unique reflector panels** for five unique lighting effects in a **simple, combined set**.

The foldable kit arrives in a **circular, zippered carrying bag**. To begin using the panels, first unzip the bag and remove the folded kit. As you remove the kit, allow it to naturally unfold and bounce into its full, circular shape. Folded inside the carrying bag, the kit measures 16 inches in diameter. When the kit is removed from the bag and unfolded, its full, circular shape measures 42 inches in diameter.

The gold / silver and white / black reversible panel covers arrive in place, **zipped around the center white panel** that serves as a frame. Any of these four surfaces may be used by simply unzipping the cover, removing, reversing and replacing it so that the desired surface is facing the outside. Removing this reversible cover entirely allows you to use the translucent white "shoot-thru" diffusion panel alone, placed in front of a light source to soften the output.



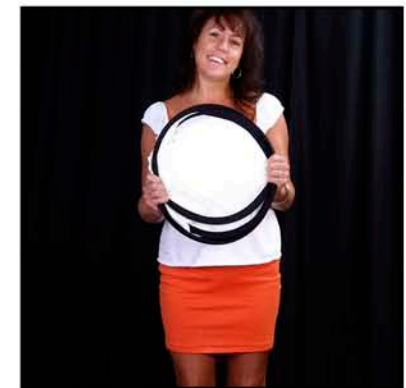
begin twisting



halfway point - figure eight shape



continue twisting



smaller circle forms



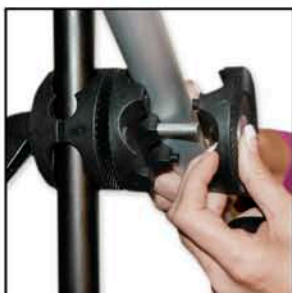
your right hand



your left hand

To fold the kit and return it to its carrying bag, first ensure that the reversible cover is in place and fully zipped up around the center panel. Hold the kit in front of you with your hands on opposite sides of the frame. Your right hand should be bent in, facing away from you with your fingers pointing towards the center of the circle. Your left hand should be facing towards your body with your left thumb gripping the outside ring and your other fingers gripping the side of the ring closest to your body.

The large circular frame collapses into a smaller circle as you twist your arms, gripping the sides. You will twist your wrists, quickly lowering your right hand and raising your left hand until their positions are switched - your right hand will be facing the ground with your right thumb gripping the outside ring and your left hand will be bent in with your left thumb now closest to your body. At the halfway twisting point, a soft figure eight shape forms. As you continue to twist, you will feel the frame make the shape of a circle again with the frame edges overlapping. Please call us if you're having trouble and need assistance!



The RBH2566 Reflector Kit Mounting Bracket / Holding Arm

The CRK42 Kit can be handheld by an assistant or mounted on a light stand using our **RBH2566 Mounting Bracket** (sold separately). The RBH2566 contains two pieces: a **black mounting bracket** and a **silver holding arm**. The mounting bracket is attached to the second section of your light stand on one side and attached to the holding arm itself on the other. The arm has two small clips that attach to the outer rim of your reflector panel on each side to hold it on the arm. The arm may then be tightened or expanded from 33.5 to 76.5 inches for various placement and holding capabilities.

Attaching the Mounting Bracket To Your 10-foot or 13-foot Light Stand

First, **twist the handle on one side to remove it** from the mounting bracket, revealing a silver washer around the inside screw. Remove the washer - but hang on to it as you'll replace it when you attach the handle again. Pull this side of the bracket off of the center screw.

Position the bracket around the pole of the light stand and allow the pole to fit in the remaining groove. As *the bracket is designed to fit multiple pole sizes, you will need to twist the bracket until you find the appropriate hole size*. Slide the removed side back on to the center screw, with the pole of the stand nestled snugly between. Once together, replace the silver washer and screw the handle back on the mounting bracket until it is secure.

With your mounting bracket attached to the light stand, you'll next attach the silver holding arm to the other side of the bracket. **Twist and remove the handle on the other side**, again removing the washer and pulling this side of the bracket off of the screw. The arm fits between the two sides in the remaining groove. Slide the removed side back on to the screw with the arm resting between. With the two bracket sides together, replace the washer and screw the handle back on the mounting bracket until it is secure.

On each end of the holding arm there is a **small black spring clip** that attaches to the outer rim of your panel on both sides. The clip is pulled back to open then released to snap closed.

To attach your panel to the holding arm, first adjust the arm (using the tightening knobs) to the desired width and **line up the two clips with the edges of your reflector kit**. If you wish for your reflector to be fully expanded and positioned flat, you will position the clips approximately 42 inches apart (as the diameter of the expanded kit is 42 inches). To position the clips, you can either expand / contract the arm further or use the tightening knobs on the clips themselves. Loosening these knobs on the clips will allow you to slide the clips up and down the arm.

